

Assembling the *Motor Controller*

The *Motor Controller* (Figure 1) can operate either one unipolar stepper motor or four servo motors. It requires an external DC power supply, connected either through screw terminals or a 2.1 mm, center positive jack. The easiest way to use the controller is with the specific motors and DC transformer we recommend.

If you plan to use just the equipment we provide, you can skip the next two paragraphs and begin "Step 1." If you want to use motors or a power supply other than the ones we provide or recommend, the following information is extremely important.

1. Unipolar stepper motors are available to operate at a wide range of different voltages. This controller can operate between 6 volts and 24 volts, but the current per coil should not be greater than 0.35 A. (Stepper motors typically use 2 coils at once, so the total current they draw is twice the current per coil.) It is essential that you match the current and voltage specifications of any stepper motor you plan to use with the capabilities of the power supply and the Motor Controller. You can recognize unipolar stepper motors by the fact that they have either 5 or 6 wires. Stepper motors with only 4 wires or with more than 6 wires will not work with this controller.
2. Most popular hobby servo motors will work with this controller. These require 5 volts, but the input voltage to the Motor Controller must be at least 6 V for the electronics to function correctly. When used with servo motors, the ideal input voltage to the board is 6 V, although it can be as great as 24 V. The board's voltage regulator reduces the voltage to 5 volts and converts the rest of the energy to heat.

Step 1: Orientation to the Printed Circuit Board

- Look at the printed circuit board (PCB) and the figures at the end of this document. Be sure you understand how the board should be oriented. All the components (except for insulated feet) will be placed on top of the board while it is oriented as shown in Figure 1. To attach each component, you will turn the board over and solder from the bottom.

- Notice that the board is "double sided," meaning that it has lines of metal printed on both top and bottom. These metal traces are the "wires" which will conduct electricity. Look closely at some of the holes on the board. They are "plated through" so that metal (and electricity) goes through the board at those points.

Step 2 -- Identify the Parts

- The parts that will be soldered to the PCB are shown in Figure 2 and listed at right. Identify each one and lay them out where you can keep track of them. The letters indicate the recommended order of assembly.

Order	Component	Number
B	Resistors, 220 Ω	4
C	Diode	1
D	Socket, 16 pin	1
E	LEDs (red, yellow, green, orange)	4
F	Capacitor, electrolytic, 47 μ F	1
G	Phone jack, 6P6C	1
H	Straight header, 6 position	1
I	Right-angle header, 3 position	4
J	Terminal block, 2-position	1
K	Terminal block, 6-position	1
L	Voltage regulator	1
M	Power jack	1

Step 3 -- Add the Resistor (Figure 3)

Be sure that you and all the people near you are wearing eye protection. Be very alert to the fact that the soldering iron is hot.

- Insert one of the 220-ohm resistors from the top of the PCB. The resistor conducts current equally well in either direction, but good practice requires that you orient the resistor so its color code can be read from the top down. The resistor has colored bands of red, red and brown (for 22 x 101) and a gold band to indicate 5% tolerance. Red should be at the top.
- Turn the board over and solder the 2 leads. When finished, you should see a small "candy kiss"-shaped mound of solder that clings to both the solder pad on the PCB and to each of the resistor's wire leads. You should also be able to see that the solder has passed through the hole in the PC board.
- Before continuing, use the side cutters to cut off the excess wire, being very careful to protect your eyes and the eyes of every one around you.
- Solder the other 3 resistors into place in the same way as the first one.

Step 4 -- Add the Diode (Figure 4)

- Solder the diode into place as shown. Unlike the resistors, the diode must be oriented as shown, since it only conducts electricity in one direction. In fact, its function on the board is to insure that electricity will not flow backwards through the circuit even if someone connected the power supply backwards. After you solder both leads, again use the side cutters to trim the excess wire.

Step 5 -- Add the Socket (Figure 5)

The socket will hold the ULN2003A integrated circuit (IC) which is the work horse of this motor controller. The IC could be soldered directly to the board, but using a socket protects the IC from possible damage during soldering and it also makes it much easier to replace the IC if that is ever necessary.

- Note that the socket has a notch at one end. It is important to orient this notch towards the top of the board, matching the outline on the PC board. Electrically, the socket will work fine either direction, but the notch is an important reminder of how the integrated circuit (IC) chip must be oriented. It is especially important to have the socket oriented correctly in case you or someone else ever needs to replace the IC.
- Solder all of the pins in place. It is not necessary to cut off the pins

Hint -- It may be helpful to use a piece of masking tape to hold the socket to the board until you have soldered at least a few pins.

Step 6 -- Put in the LEDs (Figure 5 again)

The light-emitting diodes (LEDs) have electrical properties very similar to the other diode, but they are used for a totally different purpose--to give off light. Each one will signal when one of the circuit's four lines is active.

- Each LED must be oriented correctly, with its negative terminal closest to the resistor. The lead on the negative terminal of the LED is shorter and there is either a notch or a flat side on the plastic above. On the PC board, the negative side of an LED is "pin 1" and is

Assembling the Motor Controller

identified with a square pad rather than the usual round pad. When you have them oriented correctly, solder each diode into place.

Note -- The color sequence shown gives a 50% match with the colors used in the wires from the CBL2 or LabPro. If you want a better match, you can replace the red LED with a blue one and replace the orange LED with a white one. Blue and white LEDs are significantly more expensive than the colors shown.

Step 7 -- Add the Capacitor (Figure 6)

This is an electrolytic capacitor, and its orientation is very important. If you get it backwards, it is possible that the capacitor will (literally) blow its top.

- Notice also that capacitors are numbered with "pin 1" as the positive terminal and the one with a square pad. Be sure you know which is the negative side of the capacitor (marked on the plastic cover) and that you insert it correctly into the board.
- Solder and trim the two leads.

The capacitor's job is to help stabilize the voltage in the circuit, especially when stepper motor coils are turned rapidly on and off. It acts a bit like a flood-control dam, storing current when there's too much and releasing current when there isn't enough.

Step 08 -- Modular Jack (Figure 7)

The modular jack provides a place to connect the Motor Controller board to the CBL2 or LabPro. It is a US-style telephone jack, but has 6 connectors rather than 4.

- Carefully align the 6 pins then snap the 2 plastic supports into place. Solder all 6 pins. Note that these pins are smaller and closer together than most others on the board. They will not require as much heat or as much solder. Be sure you avoid any "solder bridges" that connect pins when they shouldn't be connected.

Step 9 -- More Connectors (Look back at Figure 1)

"Headers" provide a low-cost, convenient way to make electrical connections. Some stepper motors come with connects that fit on 5- or 6-pin headers, and almost all hobby servo motors come with connects for 3-pin headers. The headers on the motor controller will allow you to use it with either a single stepper motor or up to 4 servo motors. If you try to connect both types of motors simultaneously, at least one will behave erratically.

- Use masking tape to hold the headers in place with the short side inserted into the board, then solder them. Be sure the plastic is firmly against the PC board, but do not press too hard or the pins might slip through the plastic.

Note: The headers often come in longer strips, and you may need to break them apart.

Step 10 -- Still More Connectors (See Figure 1 again)

The 2-position terminal block provides one option for connecting the Motor Controller to a power supply. The 6-position terminal block is an alternative to the straight header when connecting stepper motors.

- **Note that both terminal blocks should be oriented with their openings toward the outside edge of the board.** Solder both connectors into place. It is not necessary to trim off the pins.

Step 11 -- Voltage Regulator

Stepper motors are available that work with a wide variety of voltages, and this *Motor Controller* can accommodate voltages from 6 V to 24 V (so long as the current per phase does not exceed 0.35 amps). To drive the motors, you will need to use a DC power source that matches the voltage and current requirement of your stepper motor.

Servo motors and LEDs, on the other hand, generally use lower voltages. The "7805" is a voltage regulator that accepts voltages up to at least 24 V and provides a constant output at 5 V. To give you the required 5 volt output, the input needs to be at least 6 volts.

- Insert the voltage regulator as shown, with the printed surface facing forward, and solder all 3 leads. Trim the leads and bend the voltage regulator backwards a bit so it doesn't stick up above the other components.
- In normal operation--especially when running several servo motors--the voltage regulator's heat sink (the metal part with the hole) may be quite warm. Make sure it is not touching any other components.

Step 12 -- Power Plug (Figure 7)

You can use the 2-position terminal block to provide energy to the Motor Controller, but sometimes it is easier to use a plug-in DC power source. This plug includes a built-in switch which disconnects the terminal block when you insert a plug.

- It is helpful to use masking tape to hold the power plug in place while you work. Also use pliers to bend the terminal inward so they make good contact with the inside of the holes in the board, then solder each terminal into place.

Step 13 -- Final Assembly

The soldering is finished, but there are still two important steps before the board is ready to test.

- Carefully align the ULN2003A integrated circuit (IC) with its socket. Recall that the notch in the chip must match the notch in the socket. (Some ICs have a dot, instead of a notch.) The pins on the IC flare outwards (because they are most often inserted by robots), and you may need to bend them slightly to make sure that each pin is resting directly in a hole of the socket. When you are sure every pin is started in the correct hole, push downward firmly on the IC to seat it securely. Look carefully to make sure all 16 pins actually went into the correct holes. If one bent off in another direction, you must remove the IC, restraighten the pins and try again.

The ULN2003A is "Darlington array," used as a 7-channel switch. A small signal to a pin on the lower side of the IC connects the opposite pin to ground. The IC also includes built-in diodes to help control the voltages induced as motor coils switch on and off. Since we only need 4 channels for our application, the extra three are wired in parallel for redundancy. There are many more details available on the web about this widely used IC, for example at <http://www.allegromicro.com/datafile/2001.pdf>

- Since the bottom of the board includes exposed electrical conductors, it is important to keep the board from touching anything below it. Stick an insulated foot onto each corner of the board. (If your Motor Controller board will eventually be mounted on a robot, you may want to use screws and standoffs, rather than the stick-on feet.)

Step 14 – Testing and Exploring

- Connect the board to a 12-V power source. Touch the IC and the voltage regulator to make sure they are not getting hot. If either is distinctly warm, disconnect the power source immediately and start looking for the short circuit.
- Connect the board's modular jack to the CBL2 or LabPro using the appropriate cable. Also connect a calculator to the CBL2 or LabPro using the "link" cable. Run the SIGNAL program and verify that all 4 LEDs turn on and off under control of the program.
- Attach a servo motor to the various servo headers, with the black ground wire to the right. Turn the power back on to the board and use the SERVO program to verify that the servos respond. Before running each program, you must store an angle in degrees (between -90 and +90) as the variable "A" (for example, 45 [STO>} A) and then run the program. After the motor moves to position A, it should remain in or close to the same position, until you change the value for "A" and run the program again. ***Disconnect the servos before continuing. The Motor Controller is designed to run either servo motors or a stepper motor. It cannot operate both at once.***
- Attach the 6 wires of a stepper motor to one of the 6-position terminals. Your group leader will help you connect the available motors. Run the STEPPER program and verify that you can make the stepper motor turn in either direction at a variety of speeds.
- If time and equipment are available, experiment with other devices. The *Motor Controller* can control up to 4 different 12-V DC devices, such as buzzers, lights, etc. To operate a 12-V buzzer, for example, connect the buzzer's positive input to one of the "+" terminals and connect its negative input to terminal 1, 2, 3 or 4. You should make sure that no one device has a resistance less than about 40 Ω , so the current in each channel stays below .3 A. The TOTAL current for all 4 channels should not exceed .6 A. You can use the SIGNAL program to operate the device.
- You might also want to try a linear stepper motor if one is available.

Assembling the Motor Controller

Motor Controller

CS2-SVL-A-1, Version 1.32

Order	Component	Number	Supplier	Part Number
A	Circuit Board	1	Math Machines	CS2-SVL-A-1
B	Resistors, 220 ohm, 1/4 W	4	Mouser	291-220
C	Diode, 1N4001	1	Jameco	35975
D	Socket, DIP 16 pin MIL Max	1	Mouser	575-199316
E1	LED (red)	1	Jameco	94511
E2	LED (yellow)	1	Jameco	34825
E3	LED (green)	1	Jameco	34761
E4	LED (orange)	1	Jameco	107393
F	Capacitor, Electro, Radial, 47 μ F	1	Mouser	140-XRL35V47
G	Phone jack, 6P6C, PCB mount, side entry	1	Mouser	571-5551651
H	Straight header, .1", 6P	1	Mouser	517-6111TN
I	Right Angle header, .1", 3P	4	Jameco	103270
J	Terminal Block, 2-position	1	Mouser	571-7969492
K	Terminal Block, 6-position	1	Mouser	571-7969496
L	IC, 7805 Voltage Regulator	1	Jameco	51262
M	Power Jack, 2.1 mm	1	Mouser	163-5004
N	Darlington Array, ULN2003A	1	Mouser	511-ULN2003A
	EITHER			
O	Rubber feet	4	Mouser	517-SJ-5306CL
	OR			
P	6-32 x 3/8" spacer (nylon)	4	Mouser	561-L6.375
Q	6-32 x 1/4 Machine Screw (nylon)	4	Mouser	561-P632.25
Cable				
	LabPro Dig Sonic to Modular Jack	1	Math Machines	
Suggested Power Source				
	13.5 V, 15 W AC Adapter		Mouser	418-TR1512-01
Suggested Servo Motors				
	Futaba S3003		Tower Hobbies	LB7038
	TS-53 Standard Servo		Tower Hobbies	LXUK84
Suggested Stepper Motors				
	15 deg step, geared 1:85.25 (low cost)		Jameco	237761CL
	1.8 deg step, ungeared (high quality)		Applied Motion	5017-008
	http://www.mouser.com		Mouser Electronics	
	http://www.jameco.com		Jameco Electronics	
	http://mathmachines.net		Math Machines, Ltd.	
	http://www.towerhobbies.com		Tower Hobbies	
	http://applied-motion.com		Applied Motion	

Assembling the Motor Controller

Figure 1



Figure 2

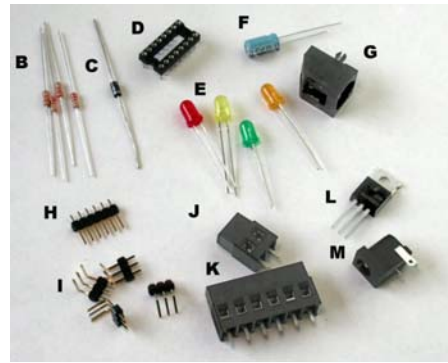


Figure 3

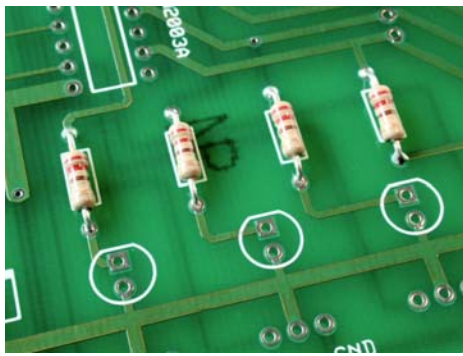


Figure 4

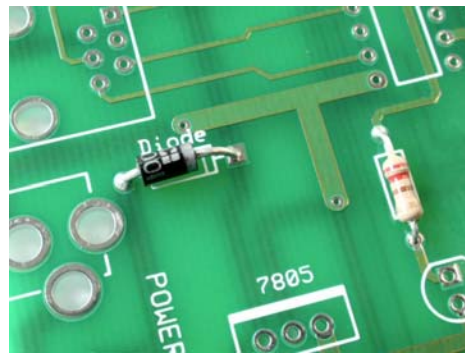


Figure 5

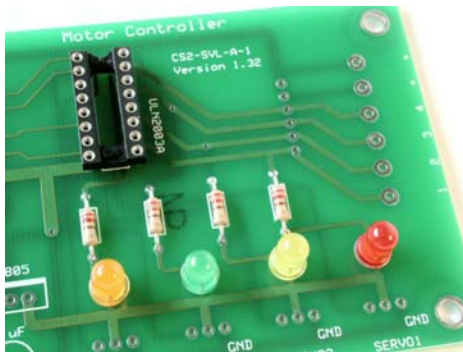


Figure 6



Figure 7

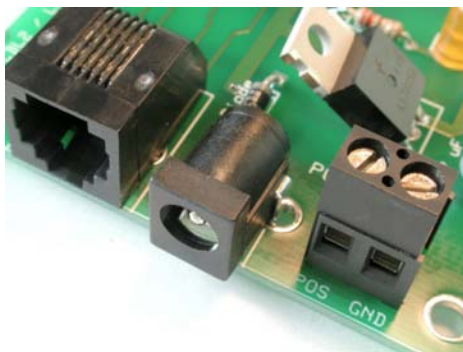


Figure 8

